

Pollination Station



Introduction

- ▶ Ask students to share their favorite types of fruits and vegetables.
- ▶ Ask students if they know where these fruits and vegetables grow (trees, gardens, and farms)
- ▶ **Explain pollinators:** There are about 200,000 species of animals that pollinate; some examples include Honey Bees, Hummingbirds, Ladybugs, Beetles, Butterflies, and Bats. They are essential to agriculture because they help maintain our ecosystems.
- ▶ **Explain pollination:** a very important part of the life cycle of plants. Insects, birds, bees, water, and wind move pollen from one part of a flower to another flower, which causes the plants to make seeds and reproduce. Many crops you consume need pollinators to grow: almonds, apples, peaches, blueberries, grapes, etc.

Supplies

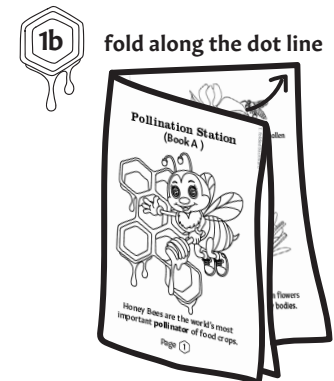
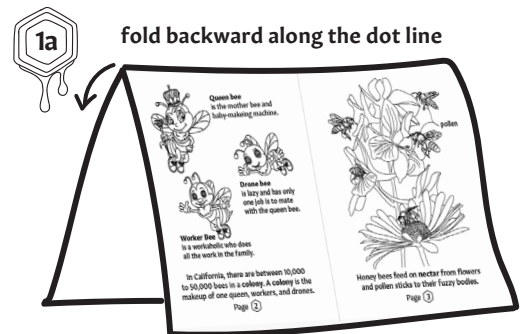
- ▶ “Pollination Station” printout
 - ▷ Book “A”: Early learners
 - ▷ Book “B”: Advanced learners
- ▶ Markers, crayons, or colored pencils

Steps

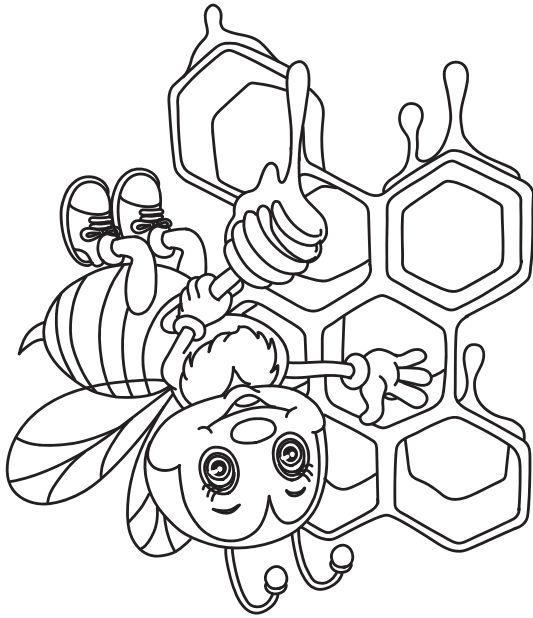
1. Show students how to fold the book
2. Have students read aloud the description and color the image
 - a. Book “B” word bank: pollinator, colony, nectar, & pollen
3. Ask students to recall the facts in the book
4. Challenge students to keep an eye out for pollinators in their daily life

Related Resources

- ▶ “The Buzz” game
- ▶ Where Would We Be Without Honey Bees
- ▶ Prolific Pollinators

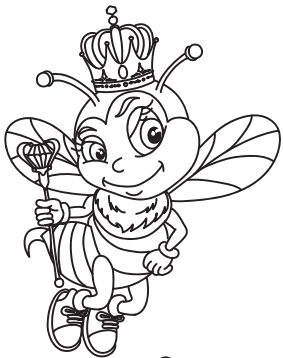


Honey Bees are the world's most important **pollinator** of food crops.

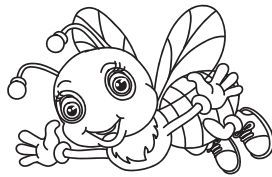


Pollination Station (Book A)

← 1a. folded 1st



Queen bee is the mother bee and baby-making machine.



Drone bee is the male, and his job is to mate with the queen bee.



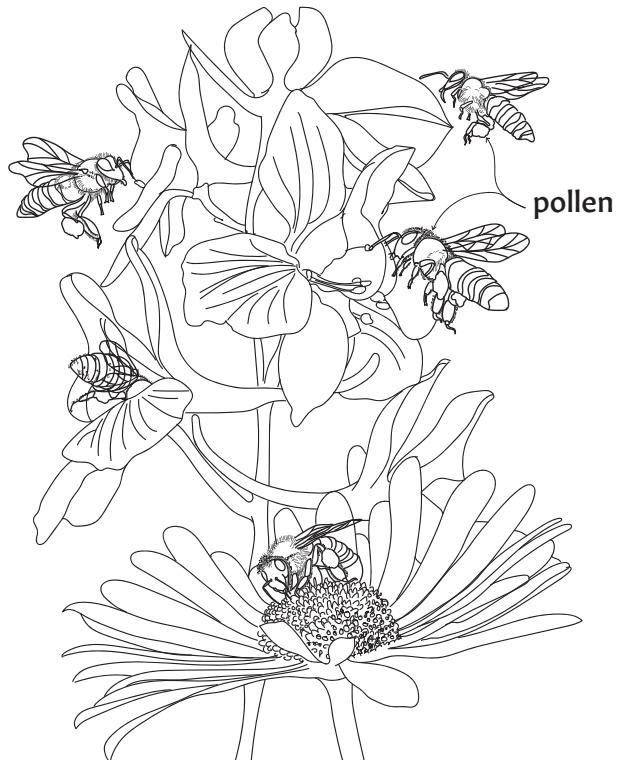
Worker Bee
Worker bee is the task bunny who does all the work in the family.

In California, there are between 10,000 to 50,000 bees in a **colony**. A **colony** is made up of one queen, workers, and drones.

Honey bees carry the **pollen** from flower to flower, which helps the flowers produce seeds and grow some of our favorite crops!

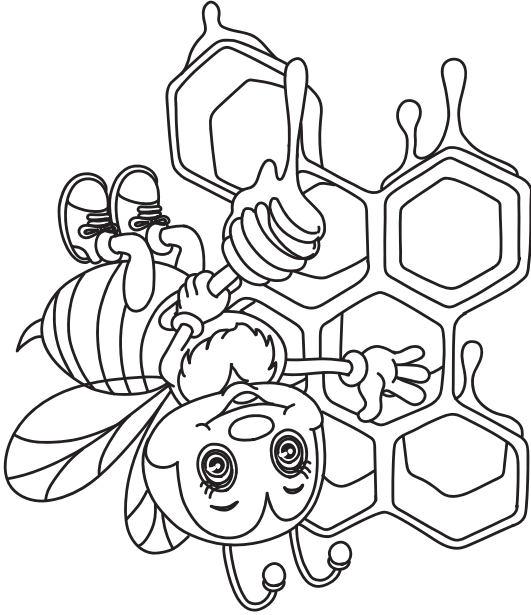


← 1b. fold 2nd



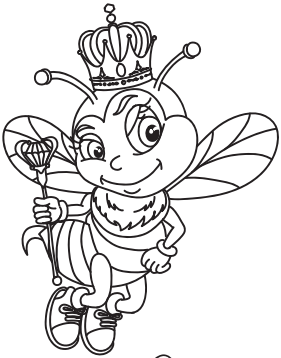
Honey bees feed on **nectar** from flowers and pollen sticks to their fuzzy bodies.

Honey Bees are the world's most important _____ of food crops.

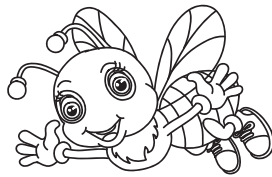


Pollination Station (Book B)

← 1a. folded 1st



Queen bee is the mother bee and baby-making machine.



Drone bee is the male, and his job is to mate with the queen bee.



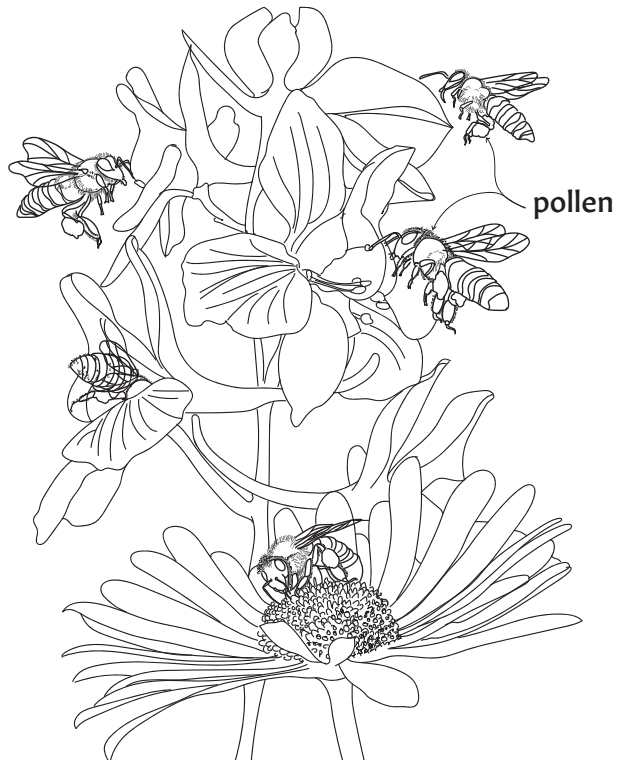
Worker Bee
Worker bee is the task bunny who does all the work in the family.

In California, there are between 10,000 to 50,000 bees in a _____. A _____ is made up of one queen, workers, and drones.

Honey bees carry the _____ from flower to flower, which helps the flowers produce seeds and grow some of our favorite crops!



← 1b. fold 2nd



Honey bees feed on _____ from flowers and pollen sticks to their fuzzy bodies.